

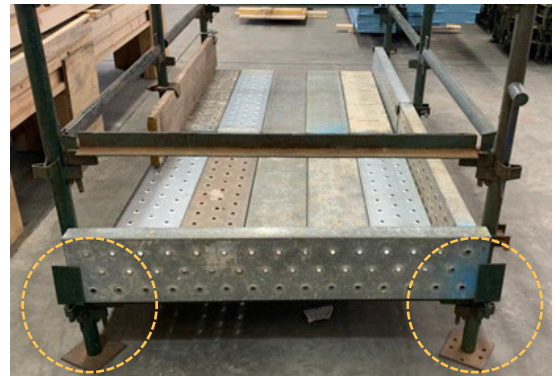
FIXING OF TOE BOARDS/KICKER BOARDS

Recent incidents on construction sites have revealed an issue involving toe boards/kickers on scaffolds. Our contract scaffold companies are amongst the best in the country as far as compliance goes, but it is out of our control to police our scaffolds if you are no longer onsite.

We cannot control everyone's behaviour, but we can control the collapse or movement of a toe board/kicker if it is knocked, hit, or stood on. Incidents can occur onsite, however we all have a responsibility to mitigate hazards and in turn the risk.

To ensure toe boards/kickers cannot become inadvertently (or otherwise) dislodged or removed, they need to be positively fixed with the systems recommended components or any other compliant means.

Photos of differently fixed kickers and the components used:



Authorised by John Setka, Secretary,
Elias Spervasilis, Assistant
Secretary of the CFMEU Construction
and General Division.

The CFMEU OH&S Unit gratefully
acknowledges the support of Incolink.

P 03 9341 3444

E vicqueries@cfmeu.org

FOR FURTHER INFORMATION,
CONTACT THE CFMEU OFFICE 9341 3444

CFMEU
VICTORIA