

# NATIONAL SAFETY ALERT

## Safety Alert

KLINGERIT 200 **CONTAINS ASBESTOS**

This health and Safety alert is a result of an inspection by the CFMEU QLD after Yuanda Klingerit 200 was suspected of being imported and used in spite of containing chrysotile asbestos.

Asbestos products are BANNED in Australia and are not to be used in the construction of new buildings under any circumstances.

### **ACTION REQUIRED:**

- Immediately check site log/register of Imported Building Product highlighting the name KLINGERIT 200.
- If located immediately notify site management/supervisor, the site Health & Safety Rep (HSR), CFMEU Delegate/Shop Steward and the relevant State Safety Regulator.
- Immediately quarantine product for proper accredited removal.

CFMEU ACT Branch:  
02 6267 1599

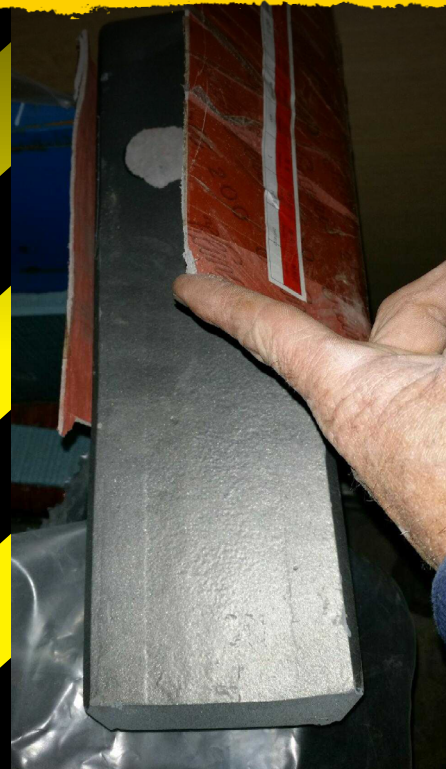
CFMEU QLD/NT Branch:  
07 3231 4600

CFMEU NSW Branch:  
02 9749 0400

CFMEU SA Branch:  
08 8231 5532

CFMEU WA Branch:  
08 9228 6900

CFMEU VIC/TAS Branch:  
03 9341 3444



*Safety is union business.*  
**STAND UP. SPEAK OUT. COME HOME.**

# NATIONAL SAFETY ALERT



Location of Bracket on Truss to Fin

Scallop 'E'

*Safety is union business.*  
**STAND UP. SPEAK OUT. COME HOME.**