

ENVIRONMENTAL AND OCCUPATIONAL HEALTH & SAFETY UNIT

OHS ALERT

FEBRUARY 2025

TITAN SHACKLE FAILURE...

MAKE SURE YOU GIVE THEM ALL A THOROUGH INSPECTION BEFORE USE!

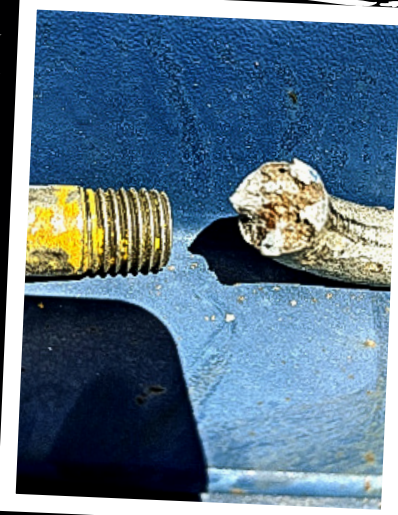
A RECENT FAILURE OF A TITAN SHACKLE HIGHLIGHTS ONCE AGAIN THE OFTEN PRECARIOUS AND HAZARDOUS NATURE OF OUR INDUSTRY!

In this case (February 12th 2025), a Titan 4.7T shackle broke (see photos below) whilst a “muck-out” bin was being lifted by a Franna. The metal deformation of the shackle is quite revealing!

The lifting configuration and procedure was all correct – the only failure was the “shackle”.

If you are using Titan shackle's on your site / in your workplace - make sure they are given a thorough visual inspection by an “appropriately qualified and trained” person prior to use. Any shackles that are damaged – are not to be used and need to be replaced immediately!

If in any doubt phone the CFMEU and/or your area organiser.



9341 3444



VIC.CFMEU.ORG

CFMEU
VICTORIA

Authorised by Dr Gerry Ayers, Manager of the OHS&E Unit
CFMEU VIC-TAS Branch, Construction and General Division.
The CFMEU OH&S Unit gratefully acknowledges the support of Incolink.