

# DARE TO LEARN

2022



**RTO  
NUMBER  
3688**



**Building**

**CFMEU  
Education  
& Training**

**skills for life**

# WHERE DO YOU WANT TO GO?

Congratulations on daring to learn. You're really doing yourself a favour by choosing CFMEU training. Not only will you improve your job prospects, but with the extra skills you'll gain, your pay packet will also improve.

Most CFMEU training is **free** to the majority of members, and better still, you may get paid while you learn. If you would like more detailed information about our courses, including career pathways in the construction industry, have a look at our Course Pathways Guide.

CFMEU training builds skills for life.

**What are you waiting for?  
Download an application  
form from our website at  
[https://vic.cfmeu.org.au/  
training-better-future](https://vic.cfmeu.org.au/training-better-future)  
or contact the union on  
(03) 9341 3444.  
Dare to Learn today.**



John Setka  
Branch Secretary

Welcome to the CFMEU Education and Training Unit. This directory lists the courses available at the CFMEU, and includes course prerequisites and duration.

#### National Recognition

The CFMEU provides a range of structured, competency-based, accredited courses delivered by skilled teachers and industry trainers – people who know the industry and environment you work in. The CFMEU is a registered training organisation with the Australian Skills Quality Authority (ASQA), and your qualifications are recognised throughout Australia. The CFMEU, however, is not registered on the Commonwealth Register of Institutions and Courses for overseas Students (CRICOS) so we are unable to offer courses to student visa holders.

#### Flexible Delivery

We offer a range of integrated vocational training programs to employed and unemployed building and construction workers. To make these courses accessible to all, they can be delivered either on or off-site.

#### Education for All

All our training programs are designed to provide maximum access for workers regardless of educational level, disability or language background.

#### Your Experience Recognised

The CFMEU Education and Training Unit holds a comprehensive record of the courses completed and the competencies achieved by all workers who participate in our courses. This record assists workers to identify new training needs, and provides a central location for workers to access their training records.

#### Programs for the Industry, by the Industry

All the courses have been developed by specialist teachers in conjunction with workers, employers and union representatives from the building and construction industry. The CFMEU does not engage third parties to deliver any of its courses. The CFMEU may engage an external provider to deliver part of a course should the need arise.

The CFMEU Education and Training Unit receives funding from a range of sources, meaning that in most instances workers' course fees are covered.

These funding sources include:

- Incolink – the Victorian Building and Construction Industry Redundancy Fund;
- Building and Construction Industry Training Fund;
- Victorian State Government – through the Department of Education and Training;
- Employer sponsorships; and
- Fee-for-service activities.

National Training Organisation  
Identification Number  
3688

CFMEU Education & Training Unit  
Head Office (postal address)  
Level 2, 262 Lorimer St, Port Melbourne,  
3207

TRAINING VENUES  
High Risk Work Centre  
1-11 Wharf Rd, Port Melbourne

General Construction/Trades Centre  
4/31 Sabre Dve, Port Melbourne  
8, 9, 10/41 Sabre Dve, Port Melbourne

Representation & OHS  
1-11 Wharf Rd; 8, 10/41 Sabre Dve,  
Port Melbourne

While there are dedicated facilities  
for many courses, all courses may  
be delivered across any of the above  
venues and on suitably resourced  
construction sites.

REGIONAL VENUES  
CFMEU Geelong, 6 Gheringhap Street,  
Geelong  
CFMEU Morwell, Lignite Crt, Morwell

# INDEX

Apprenticeship (carpentry)	09
Asbestos Removal	14
Certificates in WHS	06
Confined Spaces	13
Construction Induction (White Card)	06
Cranes	12
Delegates	06
Diploma of WHS	07
Dogging	11
Electrical Spotters	13
Elevated Work Platforms (booms & scissors)	11
Explosive Power Tools	09
Forklift	11
Health & Safety Reps	06
Height Safety	10
Hoists	10
Levelling and Lasers	09
Level 2 Occupational First Aid	08
Level 3 Advanced First Aid	08
Pre-apprenticeship (carpentry)	09
Pre-cast	13
Reading Construction Drawings	09
Rigging	11
Scaffolding	10
Traffic	14



# Certificate III in Construction Crane Operations

**“CFMEU training gives me  
better job security and wages,  
and means I’m safer on site”**



# WHAT YOU NEED TO DO...

## Course Application

Once you apply for a CFMEU course you'll be advised of the course dates when a spot becomes available. If you are still interested in doing the course, you must contact the training unit and confirm your attendance. There is a high demand for CFMEU courses hence if you're unable to attend the course it is important you notify us so your spot can be offered to another student. If you fail to notify the training unit and do not show up for your course, you will be charged a \$50 re-booking fee. Some of our courses have pre-requisites. When you apply make sure you meet your course entry requirements; the Course Pathways Guide provides information about recommended training pathways.

## Course Enrolment

You must complete and sign an enrolment form either prior to or on day one of your course. This contains many questions about your education, employment, and medical background. This information is collected by the state government to help shape training policy and funding. All your information is treated confidentially.

Should you require information regarding your training records, you may contact the administration staff on level 2 of the CFMEU Education and Training Unit head office at 262 Lorimer Street or phone 03 9341 3444.

Please note that enrolment alone in a CFMEU course does not guarantee the achievement of a credential. You are required to meet CFMEU course expectations along with the assessment requirements of the course you are enrolled in. The CFMEU Education and Training Unit does not guarantee that our training will lead to employment; our courses simply prepare and qualify you for a range of careers in construction.

## Fees Policy

If you are a member of Incolink and your employer pays into the Building and Construction Industry Training Fund, your course fees are covered. If you are not a member of Incolink, your employer will be invoiced when you complete the course. If you are not a member of Incolink and you are self-employed, you will be invoiced personally upon completion of the course.

## Course Information

General information about your course is contained in this directory. If you have specific enquiries about your course,

contact the training unit and speak to the relevant teacher/trainer.

## Access and Equity

The CFMEU provides language, literacy and numeracy support, and has access to counsellors and support services through Incolink. Talk to your teacher/trainer if you require access to these support services. You can request a copy of the CFMEU's access and equity policy.

## Assessment Arrangements

Most courses at the CFMEU will involve assessment. If you have any concerns about being assessed, talk to your teacher/trainer. Support is available for you during assessment if you have language, literacy, numeracy or other special needs.

## Complaints and Appeals Procedures

You have a right to appeal assessment results if you believe that you have been treated unfairly. You may also make a complaint if you believe that you have been treated unfavourably during any aspect of the training.

## Recognition of Prior Learning

If you have partly or fully completed a course that is relevant to the training you wish to enrol in, or you believe that you have the skills and experience equivalent to the competencies required in the training, you may be eligible for recognition of prior learning (RPL). You can complete an RPL application form, and your teacher/trainer will advise you of the outcome of this process. This is a similar process to the old trades recognition.

## Credit Transfer

The CFMEU is a registered training organisation (RTO) and, as such, recognises qualifications issued by other RTOs. Mutual recognition is available for any courses listed on the scope of registration of the CFMEU. If you have completed any units of a course at another training organisation, you may be eligible for credit transfer. You can complete a credit transfer application form, and your teacher/trainer will advise you of the outcome of this process.

## Language, Literacy and Numeracy Support

The CFMEU conducts pre-training reviews in order to determine if learners require additional support with language, literacy and numeracy (LL&N). Should you have LL&N barriers, the CFMEU has specialist teachers who can provide additional LL&N support to help you achieve competency in your chosen course.

## Disciplinary Procedures

The CFMEU expects that all students participating in education and training treat each other and the teacher/trainer with dignity so that teaching and learning can occur. This may be displayed by being inclusive of everyone, listening to each other, treating each other with respect free of sexist, racist, homophobic or other discriminatory attitudes. The CFMEU also expects students to attend class punctually and regularly with all the materials required to participate effectively in class activities.

Should the teacher/trainer believe that a student's conduct is not meeting the expectations of the training unit, the teacher/trainer may deem that disciplinary action is required. The CFMEU follows the disciplinary procedure contained in the rules of the union. You can request a copy of this procedure.

## Unique Student Identifier

From 1 January 2015, all students who undertake nationally recognised training require a Unique Student Identifier (USI). This is a number issued by the government to all students and provides a means by which you can access your training records from a central register. If you haven't already created a USI, the CFMEU can assist you with this process.

*Please note that training packages are subject to constant review. This means the information in this course directory may change. Please check current information when you enrol in a course.*

Our Student Handbook, which you will receive upon enrolment, has more details about what you need to do to get started. You can also download the student handbook from our website.

# SO LET'S GET STARTED...

# REPRESENTATION & OCCUPATIONAL HEALTH & SAFETY

It is highly recommended that workers complete the white card prior to enrolling in other courses.

## Representatives' Courses

### Delegates/Shop Stewards Course

**Delivery mode and time frame:**  
face-to-face 6 days (one day a week over 6 weeks)

This course is designed for elected shop stewards/delegates. Entry to the course is via nomination by a CFMEU organiser.

### Delegates Refresher Course

**Delivery mode and time frame:**  
face-to-face 1 day

### Health & Safety Representatives Initial OHS Training Course

**Delivery mode and time frame:**  
face-to-face 5 days  
(one day a week over 5 weeks)

Nominal hours: 35

This WorkSafe-approved course is designed for elected HSRs. All HSRs and deputy HSRs are entitled to an initial course of training in occupational health and safety as per section 67 of the *OH&S Act 2004*. HSRs can choose their course in consultation with their employer. The learning objectives for this course include:

- Interpreting the occupational health and safety legislative framework and its relationship to the HSR
- Identifying key parties and their legislative obligations and duties
- Establishing representation in the workplace
- Participating in consultation and issue resolution
- Representing designated work group members in any OHS risk management process undertaken by the appropriate duty holder/s
- Issuing a Provisional Improvement Notice (PIN) and directing the cessation of work

### Health & Safety Representatives Refresher OHS Training Course

**Delivery mode and time frame:**  
face-to-face 1 day

This WorkSafe-approved course is designed for workers, HSRs and deputy HSRs who have completed the *HSR Initial OHS Training Course* and includes a review of the OHS laws and codes, and examines contemporary studies of

workplace violence. All HSRs and deputy HSRs are entitled to attend a refresher course, under the *OH&S Act 2004*, at least once a year after completing the initial course, as long as they hold office. Refresher training is to be undertaken at a course of their choice in consultation with their employer.

## Occupational Health and Safety Courses

### Construction Induction (white card)

**Delivery mode and time frame:**  
face-to-face 1 day

Nominal hours: 6

### Prepare to work safely in the construction industry

CPCCWHS1001

The white card is a mandatory requirement for all workers on construction sites, both domestic and commercial. It is also a WorkSafe requirement that you bring photo identification to this course.

### Basic OH&S (5-day course)

**Delivery mode and time frame:**  
face-to-face 5 days  
(one day a week over 5 weeks)  
plus project work

Nominal hours: 40

### Apply OHS requirements, policies and procedures in the construction industry

CPCCWHS2001

### Conduct workplace communication

CPCCOM1014



## Certificate III in Work Health & Safety BSB30719

**Delivery mode and time frame:**  
face-to-face 22 days plus project work

Nominal hours: 234

Recommended prerequisite: Apply OHS requirements, policies and procedures in the construction industry.

### Apply Knowledge of WHS laws in the workplace

BSBWHS307

Participate in WHS hazard identification, risk assessment and risk control processes

BSBWHS308

Contribute effectively to WHS communication and consultation processes

BSBWHS309

Contribute to WHS issue resolution processes

BSBWHS310

Participate in identifying and controlling hazardous chemicals

BSBWHS331

Identify, prevent and report potential facility emergency situations

PUAFER001

Use inclusive work practices

BSBTWK301

Implement and monitor environmentally sustainable work practices

BSBSUS411

Write simple documents

BSBWRT311

Provide first aid

HLTAID011

Apply infection prevention and control procedures to own work activities

BSBWHS332X



Units in the shaded boxes are delivered concurrently.

**Nominal hours** = the maximum hours that government will pay where eligible, and may be required by a student undertaking these courses.



# REPRESENTATION & OCCUPATIONAL HEALTH & SAFETY

It is highly recommended that workers complete the white card prior to enrolling in other courses.

## Certificate IV in Work Health & Safety **BSB41419**

**Delivery mode and time frame:**  
face-to-face 28 days plus project work

Nominal hours: 440

Recommended prerequisite: Apply OHS requirements, policies and procedures in the construction industry.



Assist with workplace compliance with WHS laws

BSBWHS412

Contribute to implementation and maintenance of WHS consultation and participation processes

BSBWHS413

Contribute to WHS risk management

BSBWHS414

Contribute to implementing WHS management systems

BSBWHS415

Contribute to workplace incident response

BSBWHS416

Write complex documents

BSBWRT411

Analyse and present research information

BSBINS401

Contribute to implementing WHS monitoring processes

BSBWHS419

Make presentations

BSBCMM411

Use inclusive work practices

BSBTWK301

## Diploma of Work Health & Safety **BSB51319**

**Delivery mode and time frame:**  
face-to-face 24 days plus additional elective and project work

Nominal hours: 460

Prerequisite: Certificate IV in WHS.

Lead WHS risk management

BSBWHS513

Lead initial response to and investigate WHS incidents

BSBWHS515



Contribute to developing, implementing and maintaining an organisation's WHS management systems

BSBWHS516

Manage WHS hazards associated with maintenance and use of plant

BSBWHS518

Lead the development and use of WHS risk management tools

BSBWHS519

Manage WHS consultation and participation process

BSBWHS522

Contribute to managing work-related psychological health and safety

BSBWHS512

Manage WHS compliance of contractors

BSBWHS514

Implement and monitor environmentally sustainable work practices

BSBSUS411

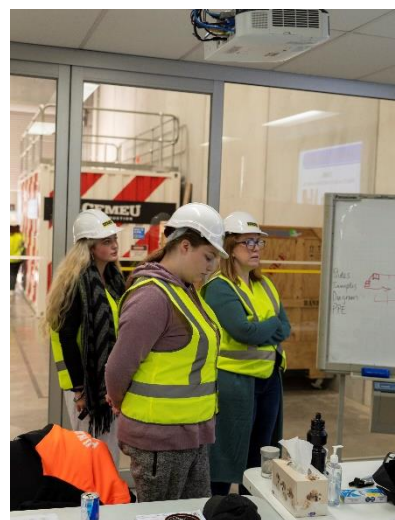
Coordinate rehabilitation and return to work programs

BSBHRM530

Or

Plan, organise and deliver group-based learning

TAEDEL401



Units in the shaded boxes are delivered concurrently.

**Nominal hours** = the maximum hours that government will pay where eligible, and may be required by a student undertaking these courses.

# FIRST AID COURSES

It is highly recommended that workers complete the white card prior to enrolling in other courses.



## Level 2 Occupational First Aid

**Delivery mode and time frame:**  
face-to-face 3 days (one day a week over 3 weeks)

Nominal hours: 18

Provide cardiopulmonary resuscitation

HLTAID009

Provide basic emergency life support

HLTAID010

Provide first aid

HLTAID011

## Cross-Sector Infection Control Skill Set

BSBSS00095

**Delivery mode and time frame:**  
face-to-face 3 days (one day a week over 3 weeks)  
integrated with Level 2 Occupational First Aid

Nominal hours: 30

Apply infection prevention and control procedures to own work activities

BSBWHS332X



## CPR

**Delivery mode and time frame:**  
face-to-face ½ day (to be completed annually)

Nominal hours: 4

Provide cardiopulmonary resuscitation

HLTAID009



## Level 3 Advanced First Aid

**Delivery mode and time frame:**  
face-to-face 4 days (one day a week over 4 weeks)

Nominal hours: 90

Provide first aid in remote or isolated site

HLTAID013

Provide advanced first aid

HLTAID014

Provide advanced resuscitation and oxygen therapy

HLTAID015

Manage first aid services and resources

HLTAID016

Advanced Resuscitation

**Delivery mode and time frame:**  
face-to-face 1 day (to be completed annually)

Nominal hours: 16

Provide advanced resuscitation and oxygen therapy

HLTAID015

## Refreshers

Level 2 Occupational First Aid Refresher

**Delivery mode and time frame:**  
face-to-face 1 day (to be completed every 3 years)

Level 3 Advanced First Aid Refresher

**Delivery mode and time frame:**  
face-to-face 2 days (to be completed every 3 years) (one day a week over 2 weeks)



Units in the shaded boxes are delivered concurrently.

**Nominal hours** = the maximum hours that government will pay where eligible, and may be required by a student undertaking these courses.



# TRADE-RELATED TRAINING

It is highly recommended that workers complete the white card prior to enrolling in other courses.

## Reading Construction Drawings

**Delivery mode and time frame:**  
face-to-face 5 days (one day a week over 5 weeks)

Nominal hours: 64

Read and interpret plans and specifications  
CPCCOM2001

Carry out measurements and calculations  
CPCCOM1015

Apply basic levelling procedures  
CPCCCM2006

## Levelling and Lasers

**Delivery mode and time frame:**  
face-to-face 1 day

Nominal hours: 8

Apply basic levelling procedures  
CPCCCM2006

## Laser Safety Awareness

**Delivery mode and time frame:**  
face-to-face ½ day



## Explosive Power Tools

**Delivery mode and time frame:**  
face-to-face 1-2 days depending on experience

Nominal hours: 16

Use explosive power tools  
CPCCCM2007



## Pre-apprenticeship (Carpentry)

The CFMEU conducts trade training in carpentry with a commercial applications of skills and knowledge

Certificate II in Building and Construction (carpentry) Pre-apprenticeship  
22338VIC

**Delivery mode and time frame:**  
face-to-face 80 days (four days a week over 22 weeks)

Nominal hours: 579

## Apprenticeship (Carpentry)

Certificate III in Carpentry  
CPC30220

**Delivery mode and time frame:**  
face-to-face delivered in 16 five-to-seven-day blocks

Nominal hours: 1000



## Skills Recognition/Skills Gap Training

The CFMEU offers skills gap training in the following areas.

Certificate I in Construction  
CPC10120

Certificate II in Construction  
CPC20120

Certificate III in Demolition  
CPC30420

Units in the shaded boxes are delivered concurrently.

**Nominal hours** = the maximum hours that government will pay where eligible, and may be required by a student undertaking these courses.

# HIGH RISK WORK COURSES

It is highly recommended that workers complete the white card prior to enrolling in other courses.

## Height Safety

**Delivery mode and time frame:**  
face-to-face 1 day

Nominal hours: 8

Work safely at heights\*  
CPCCCM2012

## Scaffolding

### Basic

**Delivery mode and time frame:**  
face-to-face 7 days (two days a week over 4 weeks)

Nominal hours: 48

Licence to erect, alter and dismantle scaffolding basic level  
CPCCLSF2001

Work safely at heights  
CPCCCM2012

### Intermediate

**Delivery mode and time frame:**  
face-to-face 6 days (two days a week over 3 weeks)

Nominal hours: 48

Prerequisite: Licence to erect, alter and dismantle scaffolding basic level

Licence to erect, alter and dismantle scaffolding intermediate level  
CPCCLSF3001

Work safely at heights  
CPCCCM2012

### Advanced

**Delivery mode and time frame:**  
face-to-face 5 days (two days a week over 3 weeks)

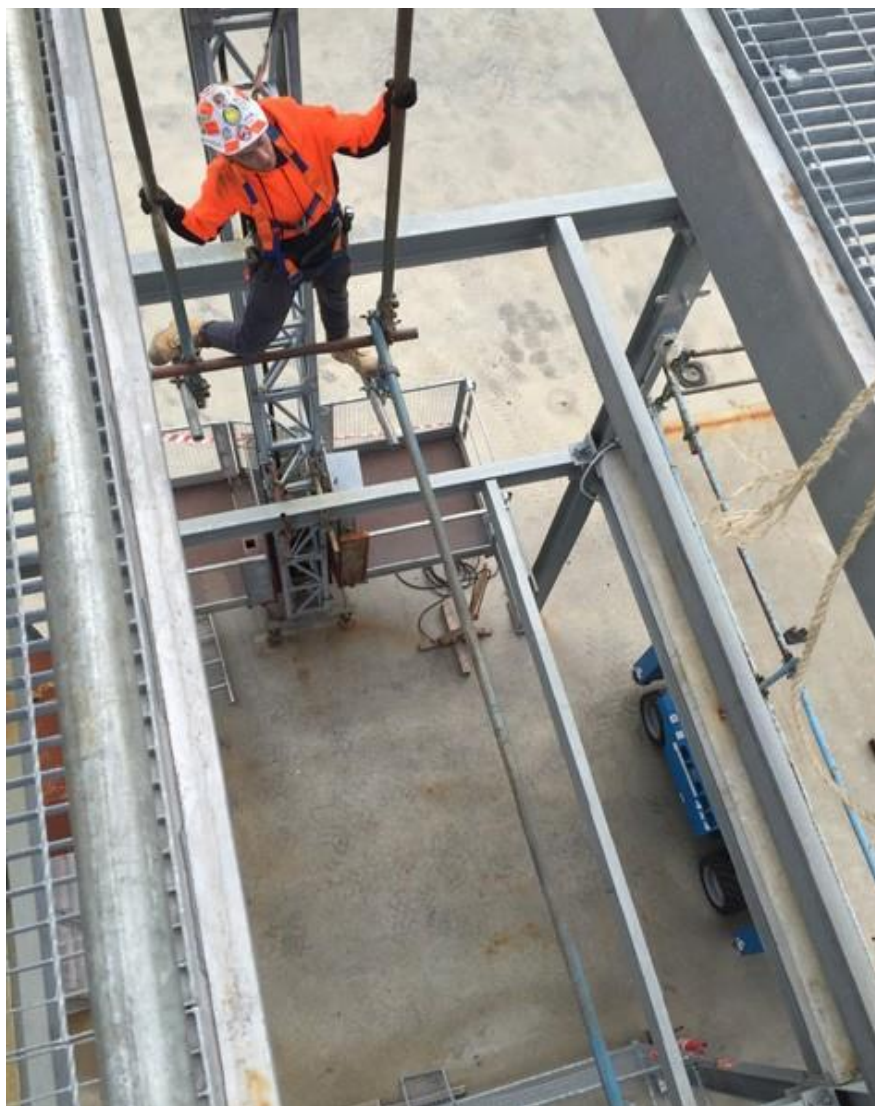
Nominal hours: 48

Prerequisite: Licence to erect, alter and dismantle scaffolding intermediate level

Licence to erect, alter and dismantle scaffolding advanced level  
CPCCLSF4001

Work safely at heights  
CPCCCM2012

\*This unit is incorporated in most of our high risk work courses.



## Hoists

### Personnel and Material Hoist

**Delivery mode and time frame:**  
face-to-face 3 days (one day a week over 3 weeks)

Nominal hours: 40

Licence to operate a personnel and materials hoist  
CPCCLSH3001

Work safely at heights  
CPCCCM2012

### Materials Hoist

**Delivery mode and time frame:**  
face-to-face 2 days (one day a week over 2 weeks)

Nominal hours: 32

Licence to operate a materials hoist  
CPCCLSH3002

Work safely at heights  
CPCCCM2012

Units in the shaded boxes are delivered concurrently.

**Nominal hours** = the maximum hours that government will pay where eligible, and may be required by a student undertaking these courses.



# HIGH RISK WORK COURSES

It is highly recommended that workers complete the white card prior to enrolling in other courses.

## Elevated Work Platforms (EWPs)

EWP Scissors and Booms  
(including 11 metres or more)

**Delivery mode and time frame:**  
face-to-face 3 days (one day a week  
over 3 weeks)

Nominal hours: 70

Licence to operate a boom-type  
elevating work platform (boom length  
11 metres or more)

TLILIC0005

Operate elevated work platforms (up to  
11 metres)

CPCCCM3001

EWP (booms under 11 metres and  
scissor lifts)

**Delivery mode and time frame:**  
face-to-face 2 days (one day a week  
over 2 weeks)

Nominal hours: 40

Operate elevated work platforms (up to  
11 metres)

CPCCCM3001

Work safely at heights

CPCCCM2012



## Forklift

**Delivery mode and time frame:**  
face-to-face 3 days (one day a week  
over 3 weeks)

Nominal hours: 40

Licence to operate a forklift truck

TLILIC0003

## Dogging

**Delivery mode and time frame:**  
face-to-face 8 days (two days a week  
over 4 weeks)

Nominal hours: 88

Licence to perform dogging

CPCLDG3001

Work safely at heights

CPCCCM2012

## Rigging

Basic

**Delivery mode and time frame:**  
face-to-face 5 days (two days a  
week over 3 weeks) plus log book/  
project work

Nominal hours: 208

Prerequisite: Licence to perform dogging

Licence to perform rigging—basic level

CPCLRG3001

Work safely at heights

CPCCCM2012

Intermediate

**Delivery mode and time frame:**  
face-to-face 5 days (two days a week  
over 3 weeks)

Nominal hours: 48

Prerequisite: Licence to perform dogging  
and licence to perform rigging –  
basic level

Licence to perform rigging –  
intermediate level

CPCLRG3002

Work safely at heights

CPCCCM2012

Advanced

**Delivery mode and time frame:**  
face-to-face 5 days (two days a  
week over 3 weeks) plus log book/  
project work

Nominal hours: 40

Prerequisite: Licence to perform dogging  
and licence to perform rigging –  
intermediate level

Licence to perform rigging – advanced  
level

CPCLRG4001

Work safely at heights

CPCCCM2012

Units in the shaded boxes are delivered concurrently.

**Nominal hours** = the maximum hours that government will pay where eligible, and may be required by a student undertaking these courses.

# HIGH RISK WORK COURSES

It is highly recommended that workers complete the white card prior to enrolling in other courses.

## Crane Traineeship

Certificate III in Construction Crane Operations  
CPC32920

Licence to perform dogging

CPCCLDG3001

Conduct workplace communication

CPCCOM1014

Apply WHS requirements, policies and procedures in the construction industry  
CPCCWHS2001

Carry out measurements and calculations

CPCCOM1015

Read and interpret plans and specifications

CPCCOM2001

Licence to operate a forklift truck

TLILIC0003

Operate elevated work platforms (up to 11 metres)

CPCCCM3001

Licence to operate a boom-type elevating work platform (boom length 11 metres or more)

TLILIC0005

Work safely at heights

CPCCCM2012

Licence to perform rigging—basic level

CPCCLRG3001

Plan and Organise Work

CPCCOM1013

Licence to operate a non-slewing mobile crane (greater than 3 tonnes capacity)

TLILIC0018

Provide first aid

HLTAID009, HLTAID010 & HLTAID011

Apply Infection Control Procedures to Own Work Activities

BSBWHS332X

Work safely around electrical sources, services and assets  
CPCCCM3003

Observe for the safe operation of plant and equipment around overhead and underground assets

VU21936

Licence to operate a slewing mobile crane (up to 20 tonnes)

TLILIC0022

Work effectively and sustainably in the construction industry

CPCCCM1012

Licence to perform rigging – intermediate level

CPCCLRG3002

Apply fatigue management strategies

TLIF2010

Apply accident-emergency procedures

TLIF2006

Licence to operate a slewing mobile crane (up to 60 tonnes)

TLILIC0023

Undertake site inspection

TLIB3015

Deliver and monitor a service to customers

BSBOPS304

Handle construction materials

CPCCCM2004

## Tower Crane

**Delivery mode and time frame:**  
face-to-face 5-7 days (one day a week over 5-7 weeks subject to weather)  
plus log book/project work

Nominal hours: 48

Recommended prerequisite: Licence to perform dogging, licence to operate a personnel and materials hoist and documented experience

Licence to operate a tower crane

CPCC LTC4001

Work safely at heights

CPCCCM2012

## Slewing Mobile Cranes

Up to 20 tonnes

**Delivery mode and time frame:**  
face-to-face 6 days (one day a week over 6 weeks depending on experience)  
plus log book/project work

Nominal hours: 70

Recommended prerequisite: Licence to perform dogging

Licence to operate a slewing mobile crane (up to 20 tonnes)

TLILIC0022

Up to 60 tonnes

**Delivery mode and time frame:**  
face-to-face 5 days (one day a week over 5 weeks depending on experience)  
plus log book/project work

Nominal hours: 70

Recommended prerequisite: Licence to perform dogging and licence to operate a slewing mobile crane (20 tonnes)

Licence to operate a slewing mobile crane (up to 60 tonnes)

TLILIC0023

Up to 100 tonnes (on application)

**Delivery mode and time frame:**  
face-to-face 4 days (one day a week over 4 weeks depending on experience)  
plus log book/project work

Nominal hours: 70

Recommended prerequisite: Licence to perform dogging and licence to operate a slewing mobile crane (60 tonnes)

Licence to operate a slewing mobile crane (up to 100 tonnes)

TLILIC0021

Over 100 tonnes (on application)

**Delivery mode and time frame:**  
face-to-face 4 days (one day a week over 4 weeks depending on experience)  
plus log book/project work

Nominal hours: 70

Recommended prerequisite: Licence to perform dogging and licence to operate a slewing mobile crane (up to 100 tonnes)

Licence to operate a slewing mobile crane (over 100 tonnes)

TLILIC0020

Units in the shaded boxes are delivered concurrently.

**Nominal hours** = the maximum hours that government will pay where eligible, and may be required by a student undertaking these courses.



# HIGH RISK WORK COURSES

It is highly recommended that workers complete the white card prior to enrolling in other courses.

## Mobile Cranes

Non-slewing Mobile and Telescopic  
Materials Handler



**Delivery mode and time frame:**  
face-to-face 5 days  
(one day a week over 5 weeks)  
plus log book/project work

Nominal hours: 60

Recommended prerequisites: Licence to perform dogging and licence to operate a forklift truck

Licence to operate a non-slewing mobile crane (greater than 3 tonnes capacity)  
TLILIC0018

## Vehicle Loading Crane

**Delivery mode and time frame:**  
face-to-face 5 days  
(one day a week over 5 weeks)  
plus log book/project work

Nominal hours: 40

Recommended prerequisite: Licence to perform dogging

Licence to operate a vehicle loading crane (capacity 10 metre tonnes and above)

TLILIC0024



## Pre-cast

**Delivery mode and time frame:**  
face-to-face 1 day

Nominal hours: 8

Identify requirements for safe precast and tilt-up work

CPCCCOM1016



## Confined Spaces

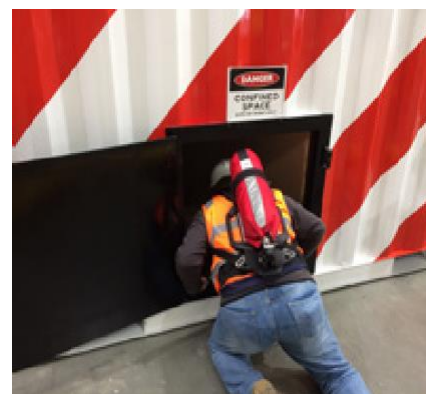
Confined Spaces Awareness

**Delivery mode and time frame:**  
face-to-face 1 day

## Working in Confined Spaces

**Delivery mode and time frame:**  
face-to-face 4 days (one day a week over 4 weeks)

Nominal hours: 108



Enter confined space

MSMPER205

Work in accordance with an issued permit

MSMPER200

Gas test atmospheres

MSMWHS217

Operate breathing apparatus

MSMWHS216

Work safely at heights

CPCCCM2012

Confined Spaces Refresher

**Delivery mode and time frame:**  
face-to-face 1 day (every 3 years)

## Electrical Spotters

Course in Workplace Spotting for Service Assets 22325VIC

**Delivery mode and time frame:**  
face-to-face 1 day

Nominal hours: 8

Prerequisites: Current CPR, relevant WorkSafe plant licence and provide first aid (HLTAID009 & HLTAID011)

Observe for the safe operation of plant and equipment around overhead and underground assets

VU21936

Spotters Update

**Delivery mode and time frame:**  
face-to-face 1 day (every 3 years)

Units in the shaded boxes are delivered concurrently.

**Nominal hours** = the maximum hours that government will pay where eligible, and may be required by a student undertaking these courses.

# HIGH RISK WORK COURSES

It is highly recommended that workers complete the white card prior to enrolling in other courses.

## Traffic

**Delivery mode and time frame:**  
face-to-face 2 days (one day a week over 2 weeks, also available on consecutive days)

Nominal hours: 40

Implement traffic management plans  
RIIWH5302E

Control traffic with a stop-slow bat  
RIIWH5205E

## Traffic Control Refresher

**Delivery mode and time frame:**  
face-to-face 1 day (every 3 years)



## Asbestos

### Asbestos Awareness

**Delivery mode and time frame:**  
face-to-face ½ to 1 day

Course in Asbestos Awareness  
10675 NAT

### Remove Non-friable Asbestos

**Delivery mode and time frame:**  
face-to-face 2 days (one day a week over 2 weeks)

Nominal hours: 20

**Prerequisite:** Prepare to work safely in the construction industry (white card)

Remove non-friable asbestos  
CPCCDE3014

### Remove Friable Asbestos

**Delivery mode and time frame:**  
face-to-face 5 days (one day a week over 5 weeks)

Nominal hours: 58

**Prerequisite:** Prepare to work safely in the construction industry (white card)

Remove friable asbestos  
CPCCDE3015

Remove non-friable asbestos  
CPCCDE3014

Work safely at heights  
CPCCCM2012

## Asbestos Refresher Friable

**Delivery mode and time frame:**  
face-to-face ½ day (every year)

## Asbestos Refresher Non-friable

**Delivery mode and time frame:**  
face-to-face ½ day (every 2 years)

## Safe Access

Course in Safe Access to  
Asbestos Affected Areas 10954NAT

**Delivery mode and time frame:**  
face-to-face 2 days (one day a week over 2 weeks)

Nominal hours: 16

**Prerequisite:** Prepare to work safely in the construction industry (white card)

Carry out work in an asbestos affected area  
NAT10954001

## Verification of Competency (VOC)

Many principal contractors are now demanding workers provide a Verification of Competency (VOC) before engaging in high-risk work. A VOC is the process by which a worker holding a high risk work licence (HRWL) confirms they have maintained the skills and knowledge of the licence classification. This can also apply to work that is not covered

by a licence such as EWP under 11 meters.

The CFMEU are now running VOC sessions for EWP, forklift, personnel & materials hoists, slewing & non-slewing mobile cranes of all capacities, tower crane, dogging and all levels of scaffolding and rigging.

These sessions provide workers with

the opportunity to refresh and update their skills and knowledge as well as confirming competence against the industry standards.

Bookings can be made on a company or individual basis and have varying time frames and costs depending on the level of VOC required. Contact us for more information.

Units in the shaded boxes are delivered concurrently.

**Nominal hours** = the maximum hours that government will pay where eligible, and may be required by a student undertaking these courses.



# CFMEU EDUCATION & TRAINING UNIT



The team at the CFMEU Education and Training Unit is comprised of:

- Administration staff qualified and experienced in business administration, finance, commerce, accounting, information technology and human resources
- Highly experienced industry trainers with qualifications in a range of specialist skills and trades across construction
- Highly qualified educational professionals with vast experience in teaching a range of learner cohorts in the VET, adult education and school sectors

# Take the next step and contact the CFMEU today!

CFMEU Education and Training Unit Head Office  
Level 2, 262 Lorimer St,  
Port Melbourne 3207  
TEL: (03) 9341 3444  
FAX: (03) 9341 3427

## Building

**CFMEU**  
Education  
& Training

## skillsfor life

**DARE TO LEARN**  
<https://vic.cfmeu.org.au>

