

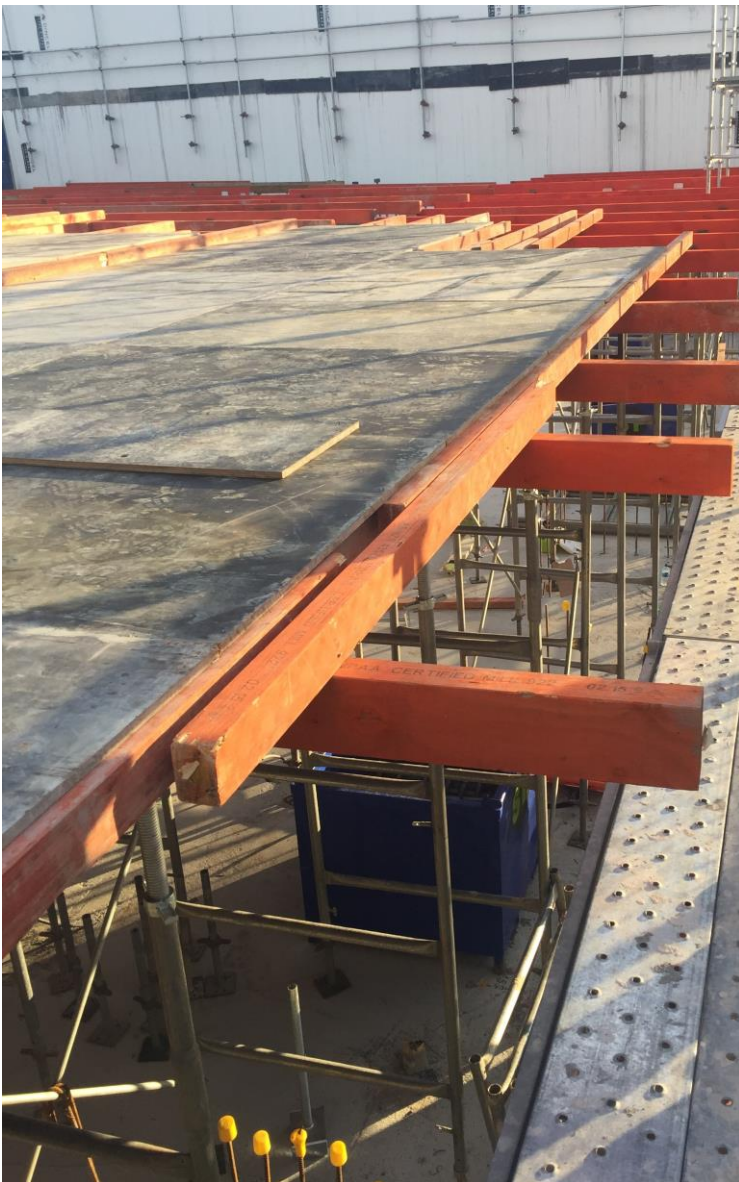
SAFETY ALERT



October 16

Formwork/Falls from heights

A worker tragically lost his life at a jobsite in Ryde this week, when he fell approximately three metres from a formwork deck onto reo bars. The bars were capped but unable to prevent the worker being impaled.



There are a number of factors that could have potentially contributed to this incident and the CFMEU is reminding of the need for adequate fall prevention measures to be implemented on all building and construction sites.

Falls from heights are responsible for around 28% of all deaths in the industry and a further 28% of all serious injuries are also the result of falls, trips and slips according to Safe Work Australia statistics.

ACTIONS REQUIRED –

- Where possible perform any work from the ground, scaffold or below the deck.
- Provide safe access to all work areas including formwork decks by using hoists, stairs or scaffolding.
- Avoid using ladders unless absolutely necessary.
- Install edge protection and penetration covers progressively and while maintaining the safety of those installing.
- Maintain only one reasonable leading edge at all times.
- Only competent/experienced formworkers are allowed access to incomplete decks.
- Maintain good housekeeping practices.
- Ensure SWMS adequately address all high risk activities.

Safety is union business.
Stand up. Speak out. Come home.



Further information –

SafeWork NSW Code of Practice –
Managing the risk of falls at workplaces

SafeWork NSW Code of Practice –
Formwork (pre WHS)

AS 3610:1995 – *Formwork for concrete*

Safe Work Australia – *Formwork and falsework guidance material*



Bar caps on reo –

Although the bar caps were unable to prevent the worker from being impaled in this incident, the CFMEU still recommends their ongoing use. Bar caps are still vitally important for protecting workers from falls at lower heights and cuts and abrasions at ground level.

For any health and safety concerns contact the CFMEU (02) 9749 0400

Prepared by Michael Preston (NSW Safety Coordinator – Approved by Brian Parker (NSW State Secretary))